

CERTIFICATE OF LOCATION OF GOVERNMENT CORNER

EAST QUARTER Corner of Section 8, Township 107, Range 41, 5TH P.M.

STATE OF MINNESOTA, County of MURRAY

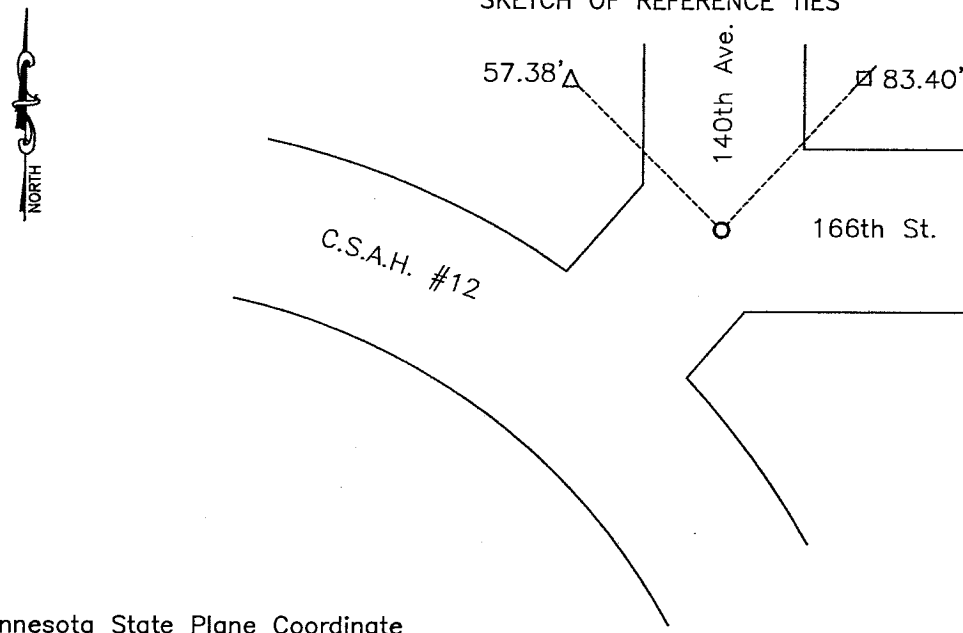
At the corner location shown on the sketch:

On MAY 26, 2010 found a WOOD HUB OVER 18" FIELD STONE.
DATE

left monument as found, lowered monument, removed monument (explain)

On MAY 26, 2010 placed a 1" PIPE WITH SEAL #43844.
DATE

SKETCH OF REFERENCE TIES



Minnesota State Plane Coordinate
System MURRAY County Datum
NAD83 (1996)
N: 187243.279
E: 495551.566

NAIL AND SURVEY MARKER IN POWERPOLE NE 83.40'
NAIL AND SURVEY MARKER IN PEDESTAL NW 57.38'

Statement of evidence relative to this corner location is on back of page.

I hereby certify that this document and the data contained herein was prepared by me or under my direct supervision.

[Signature]
SIGNATURE DATE 6/10/10

Registration No. 43844

Land Surveyor, Professional Engineer
 County Surveyor, County Engineer

OFFICE OF THE COUNTY RECORDER

County of _____ JUN 18 2010

I hereby certify that this document was filed in the Co. Recorders office at _____ .M on the _____ day of _____ A.D. 20 _____

County Recorder [Signature], Deputy

By _____, Deputy
DOCUMENT NO. _____

Statement of Evidence

Murray County had a stone recorded at corner. (no date)

On May 26, 2010 Bueltel-Moseng Land Surveying dug with backhoe (Murray County) and found a 2" by 2" wood hub down 3± feet. We kept digging and found a large 18" field stone down 5± feet. We placed a 1" pipe with seal #43844 over stone at road surface.